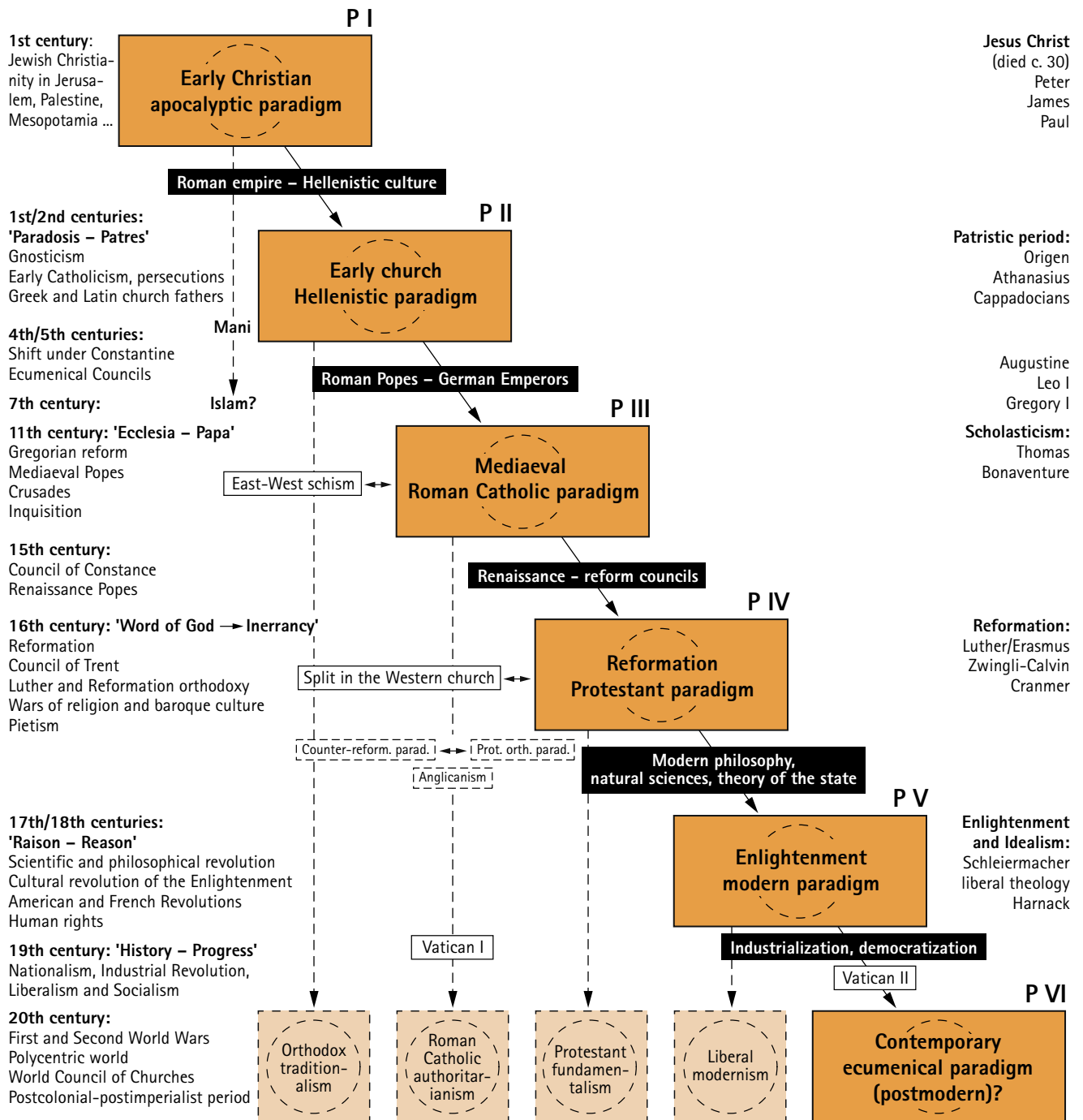


Paradigm Shifts in Christianity



The abiding substance of faith:

The message: 'Jesus the Christ.'

The decisive event of revelation: the turning point in the history of Israel as a result of the coming of Jesus of Nazareth.

The distinctively Christian element: Jesus as God's Messiah and Son.



The shifting paradigm (=P: macromodel of society, religion, theology):

'An entire constellation of beliefs, values, techniques, and so on shared by the members of a given community' (Thomas S. Khun).